



Military English

Vocabulary Builder – Terrain features

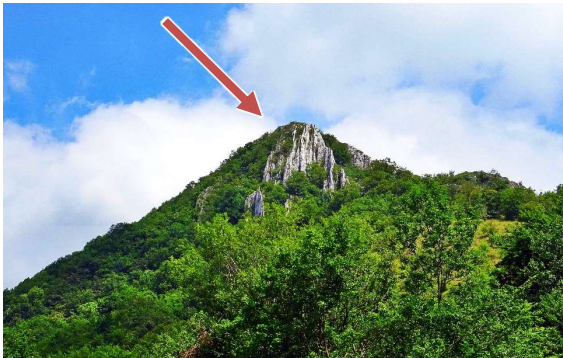
Overview:

This worksheet lists vocabulary related to topography (the forms and features of land surfaces) and terrain (the physical features of an area of land).

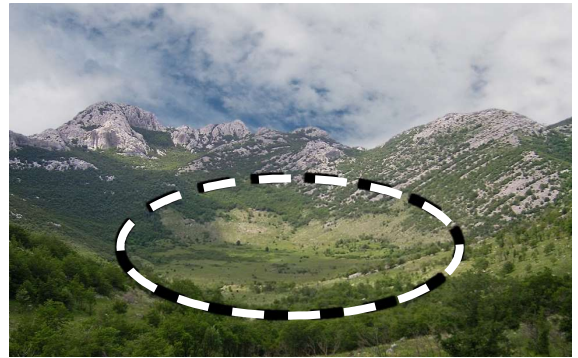
In this lesson, you will:

- ✓ learn vocabulary related to features of land
- ✓ practise vocabulary of terrain

1) Look at the pictures – match the word from the box below with its correct picture. One of them is done for you.



a. _____



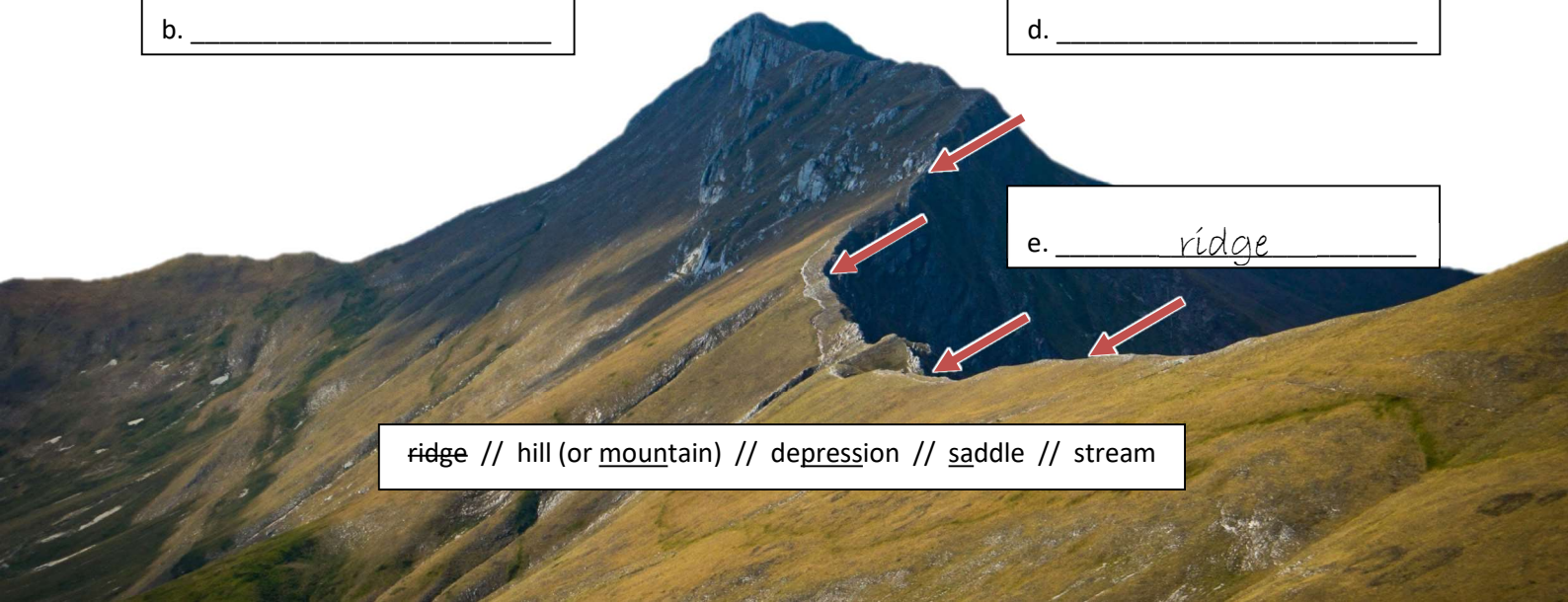
c. _____



b. _____



d. _____

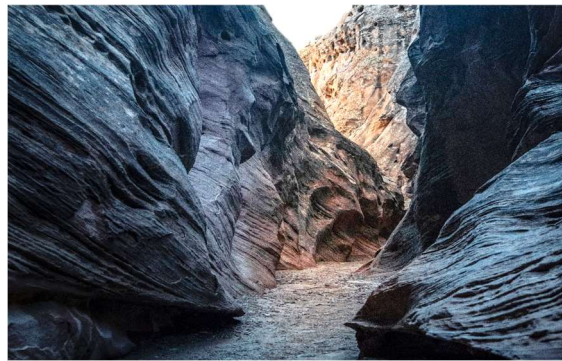


e. ridge

ridge // hill (or mountain) // depression // saddle // stream



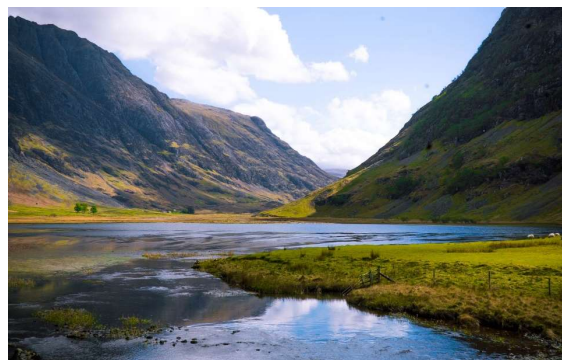
f. _____



j. _____



g. _____

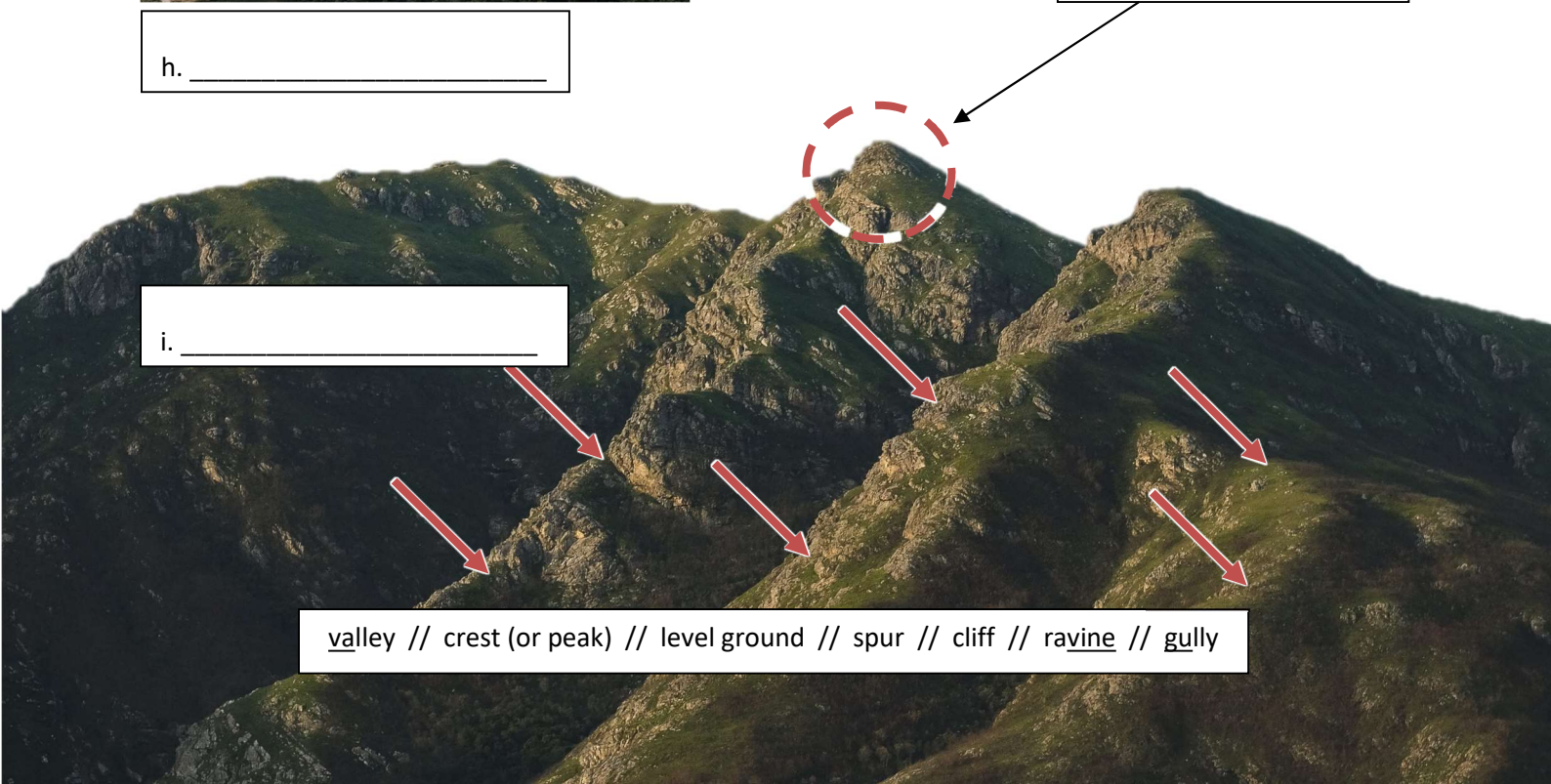


k. _____



h. _____

l. _____



i. _____

valley // crest (or peak) // level ground // spur // cliff // ravine // gully

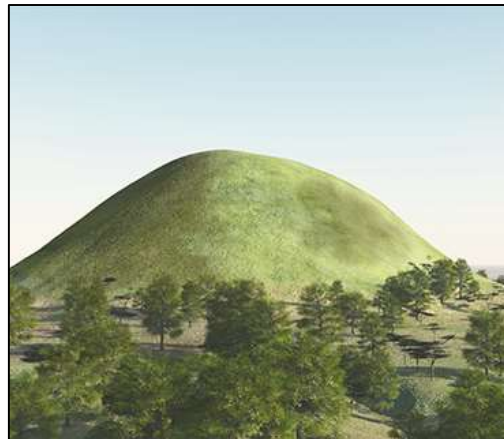
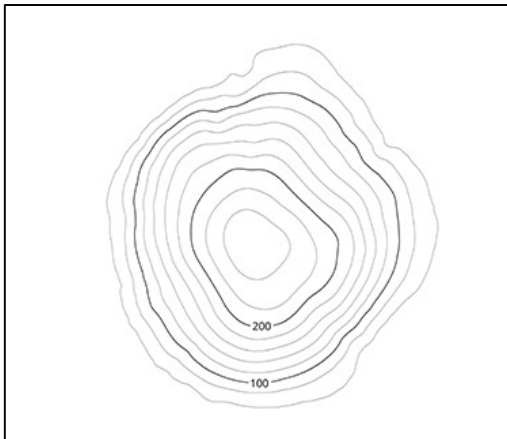
2) Now let's listen to the words practised in this worksheet. Listen and repeat.

3) Look at the pictures in this exercise. On the left is how this terrain feature looks on a **topographic map** using **contour lines**.

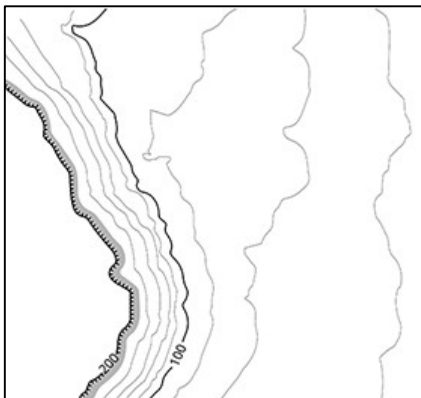
From the same box of words in Ex. 1, write the correct word into the box.

Be careful, you won't use all the words from Ex. 1

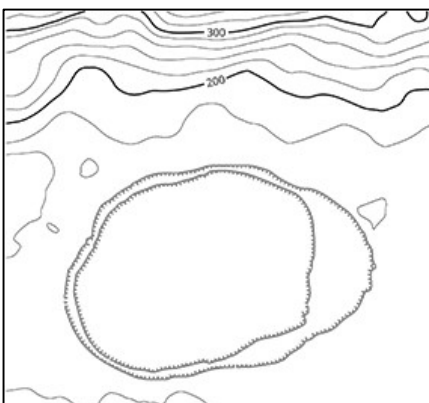
A **topographic map** shows the types of terrain like mountains and rivers. It uses **contour lines** to describe how high (or low) the land is, and also what kind of land form it is.



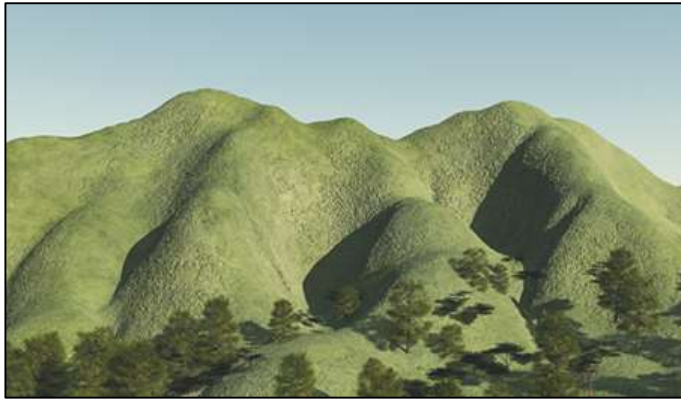
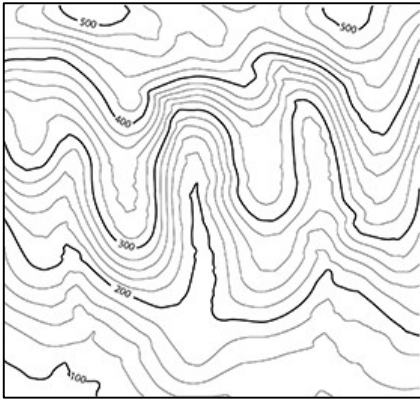
a. _____



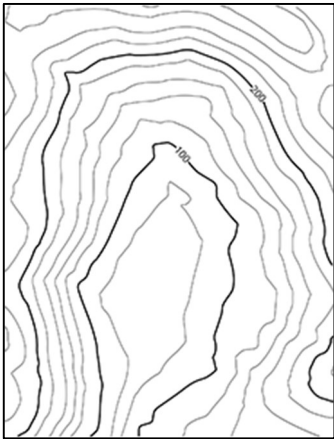
b. _____



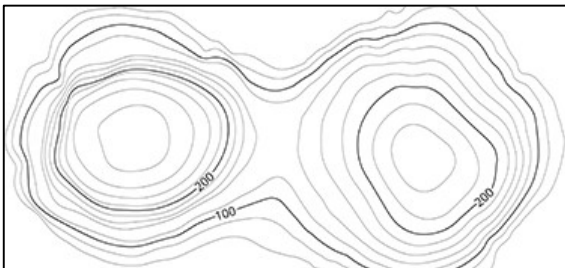
c. _____



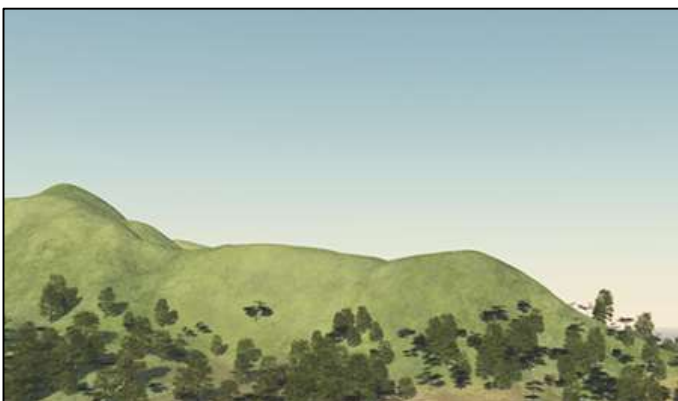
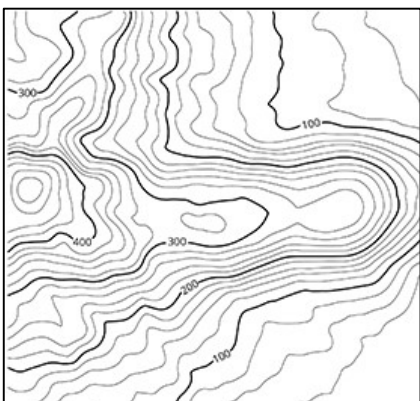
d. _____



e. _____



f. _____



g. _____

credit (pg 3, 4): [NPA NSW](#)

4) Answer these questions about some of the words you matched with the pictures in Ex 1 and 2. Use the pictures to help you. Circle the correct words in **bold**. The first one is done for you.

hill (mountain)

Is this **high ground** or **level ground**?

If you are on top of the hill / mountain, does the land around you go **down** or **up**?

ridge

Is this just **one part of a hill (mountain)**, or **more than one**?

If you are standing on this, is it **wide** or **narrow**?

If you are standing on this, are you **at the top of the mountain**, or do you need to **walk more to the top**?

valley

Is this **between** hills (mountains), or **on top** of them?

If you are in a valley, does the land around you go **up** or **down**?

Does a valley often have water in it? **Yes. No.**

saddle

Is this a **higher point** or is it a **low point** between parts of a mountain?

Which is deeper, a **valley** or a **saddle**?

ravine

Is this **between** hills/mountains or **on top** of them?

If you are in a ravine, do you have a lot of space around you? **Yes. No.**

depression

Is this **high** ground or **low** ground?

Is this ground **lower** than the area around it or **higher**?

stream

Is this **land** or **water**?

Is it a **little river** or a **big river**?

crest (peak)

Is this **low down** or **up high**?

Is it the highest point on the mountain? **Yes. No.**

Is there anything higher than this? **Yes. No.**

level ground

Is this **flat** or **high** ground?

spur



Is this part of a hill (mountain)? **Yes. No.**

Does it come out from the hill? **Yes. No.**

If you are standing on this, is the land around you going down on **all sides** or **only three sides**?

cliff

Is this like the side of a hill (mountain)? **Yes. No.**

Is the side of the mountain going like this:  or like this:  ?

gully (draw)

Is this like a valley? **Yes. No.**

Is it **small** or **big**?

Does this have water in it? **Yes. No.**

5) Read what the soldiers are saying in the sentences below. Can you use one word instead of all the words in brackets ()? Look at the example done for you.
Check your answers with a partner after you have finished.

- a. Let's meet at 1000hrs at the *(top most part of the mountain)* crest / peak.
- b. We will move up this *(high ground)* _____ and across the *(low land between the two hills)* _____, and then split into two groups.
- c. Two of you patrol on the left side of this *(little river)* _____ near the trees, and you other two
- d. We need to meet our interpreter at a town in this *(land between the two mountains)* _____.
- e. Put your fire team on the *(hill with the straight sides)* _____ over there.
- f. That *(narrow space between those two mountains)* _____ looks like a good place to wait.

6) Watch a video about terrain features. Type on YouTube [Identify Terrain features on a map](#) or scan the QR code to the right (US English).
Tick the words from this lesson that you see / hear in this short video.



- This Vocabulary Builder links with → Lesson: Map Reading and Navigation