



Military English

Vocabulary Builder – Terrain features

TEACHER'S COPY

Overview:

This worksheet lists vocabulary related to topography (the forms and features of land surfaces) and terrain (the physical features of an area of land).

In this lesson, you will:

- ✓ learn vocabulary related to features of land
- ✓ practise vocabulary of terrain

- 1) Look at the pictures – match the word from the box below with its correct picture. One of them is done for you. Give ss time to look at the photos (you will need to show them in colour on your WB for best understanding). You might need to do more than just the example with the students. Check the meanings in a dictionary for yourself if you feel the need to explain. Do this twice - this and next page.



a. hill (or mountain)



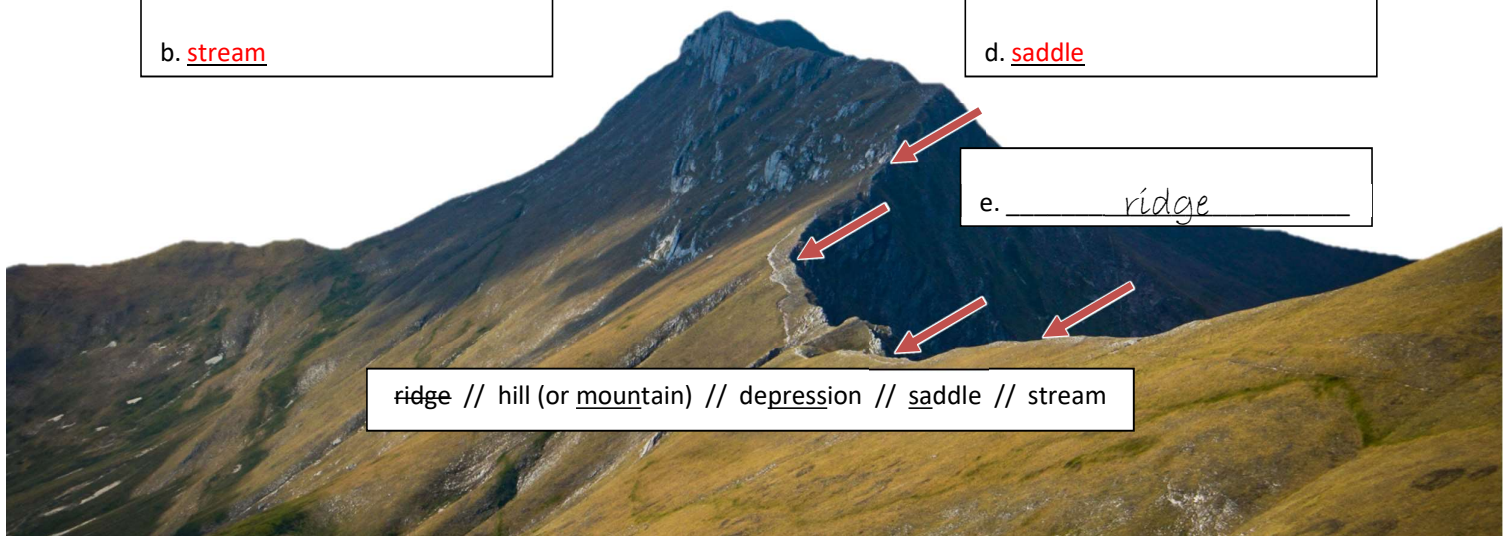
c. depression



b. stream

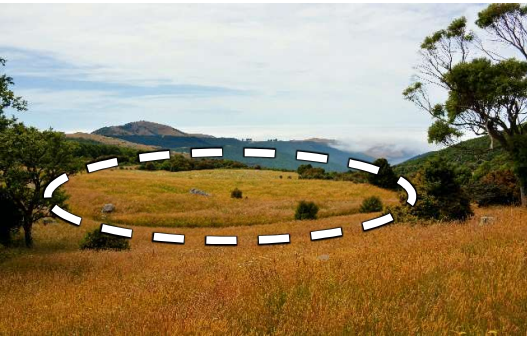


d. saddle

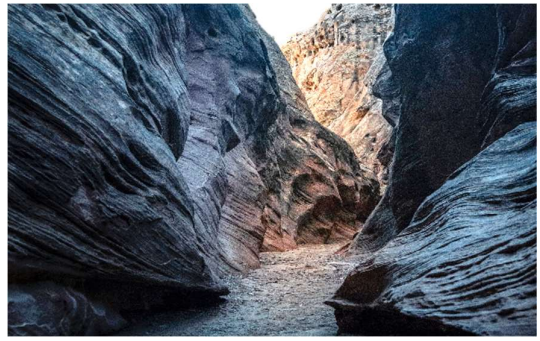


e. _____ ridge _____

ridge // hill (or mountain) // depression // saddle // stream



f. level ground



j. ravine



g. cliff



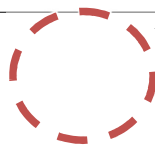
k. valley



h. gully

l. crest (or peak)

i. spur

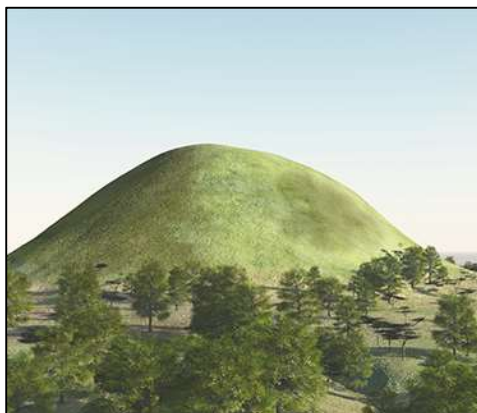


valley // crest (or peak) // level ground // spur // cliff // ravine // gully

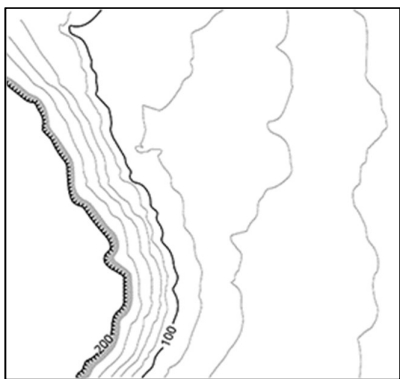
- 2) Now let's listen to the words practised in this worksheet. Listen and repeat. *After you have done feedback on the correct matched words to pictures, do this pronunciation drilling. The stressed syllables are underlined, but if you want to ask ss to turn their pages face-down, you can model and elicit the stress. Make sure you do whole class and individual drills to help all your students.*
- 3) Look at the pictures in this exercise. On the left is how this terrain feature looks on a **topographic map** using **contour lines**.

From the same box of words in Ex. 1, write the correct word into the box.
Be careful, you won't use all the words from Ex. 1

A **topographic map** shows the types of terrain like mountains and rivers. It uses **contour lines** to describe how high (or low) the land is, and also what kind of land form it is.



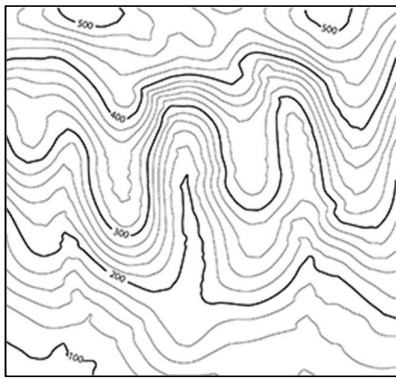
a. hill (or mountain)



b. cliff



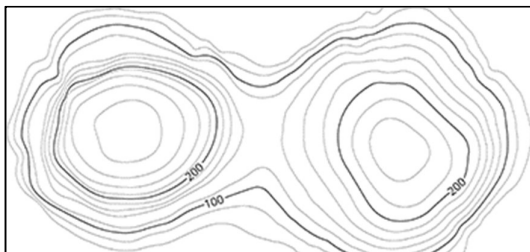
c. depression



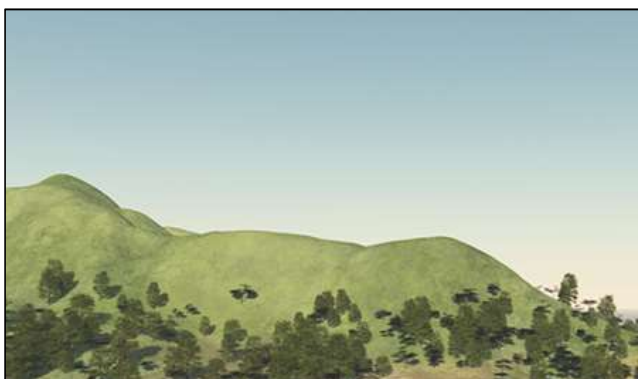
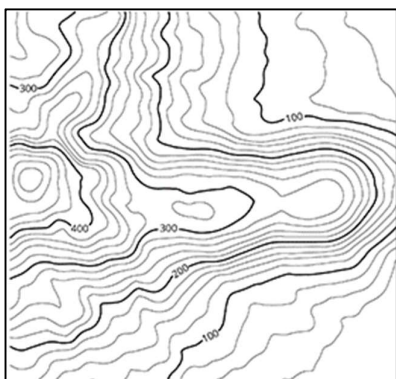
d. spur



e. gully



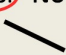
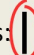
f. saddle



g. ridge

credit (pg 3, 4): [NPA NSW](#)

- 4) Answer these questions about some of the words you matched with the pictures in Ex 1 and 2. Use the pictures to help you. Circle the correct words in **bold**. The first one is done for you. Give ss enough time to read and look back at the pictures to choose an answer. These CCQs are here to help ss with the meaning of the words in this VB. Give students English dictionaries to help them answer these. Use the pictures when doing FB to make sure everyone agrees on the correct answers.

hill (mountain)	Is this high ground or level ground? If you are on top of the hill / mountain, does the land around you go down or up?
ridge	Is this just one part of a hill (mountain) , or more than one ? If you are standing on this, is it wide or narrow ? If you are standing on this, are you at the top of the mountain , or do you need to walk more to the top ?
valley	Is this between hills (mountains), or on top of them? If you are in a valley, does the land around you go up or down ? Does a valley often have water in it? Yes . No.
saddle	Is this a higher point or is it a low point between parts of a mountain? Which is deeper, a valley or a saddle?
ravine	Is this between hills/mountains or on top of them? If you are in a ravine, do you have a lot of space around you? Yes . No .
depression	Is this high ground or low ground? Is this ground lower than the area around it or higher ?
stream	Is this land or water ? Is it a little river or a big river ?
crest (peak)	Is this low down or up high ? Is it the highest point on the mountain? Yes . No. Is there anything higher than this? Yes . No .
level ground	Is this flat or high ground?
spur	Is this part of a hill (mountain)? Yes . No. Does it come out from the hill? Yes . No. If you are standing on this, is the land around you going down on all sides or only three sides ?
cliff	Is this like the side of a hill (mountain)? Yes . No. Is the side of the mountain going like this:  or like this:  ?
gully (draw)	Is this like a valley? Yes . No. Is it small or big ? Does this have water in it? Yes . No .

- 5) Read what the soldiers are saying in the sentences below. Can you use one word instead of all the words in brackets ()? Look at the example done for you.
Check your answers with a partner after you have finished.

Give instructions and talk through the example with the students, explaining that the meaning in brackets equals one of the target words in this VB. Ask students to work in pairs to do this. They can then check with another pair before whole-class feedback. It would be good to ask students to read the whole sentence including the target word for feedback to give them some further oral practice.

- a. Let's meet at 1000hrs at the *(top most part of the mountain)* crest / peak.
 - b. We will move up this *(high ground)* ridge / hill (or mountain) and across the *(low land between the two hills)* saddle, and then split into two groups.
 - c. Two of you patrol on the left side of this *(little river)* stream near the trees, and you other two
 - d. We need to meet our interpreter at a town in this *(land between the two mountains)* valley.
 - e. Put your fire team on the *(hill with the straight sides)* cliff over there.
 - f. That *(narrow space between those two mountains)* ravine looks like a good place to wait.
- 6) Watch a video about terrain features. Type on YouTube [Identify Terrain features on a map](#) or scan the QR code to the right (US English).
Tick the words from this lesson that you see / hear in this short video.



- Links with → Lesson: Map Reading and Navigation

© Commonwealth of Australia 2023

This work is copyright. Apart from any use as permitted under the Copyright Act 1968 (Cth), no part may be reproduced by any process without prior written permission from the Department of Defence.